



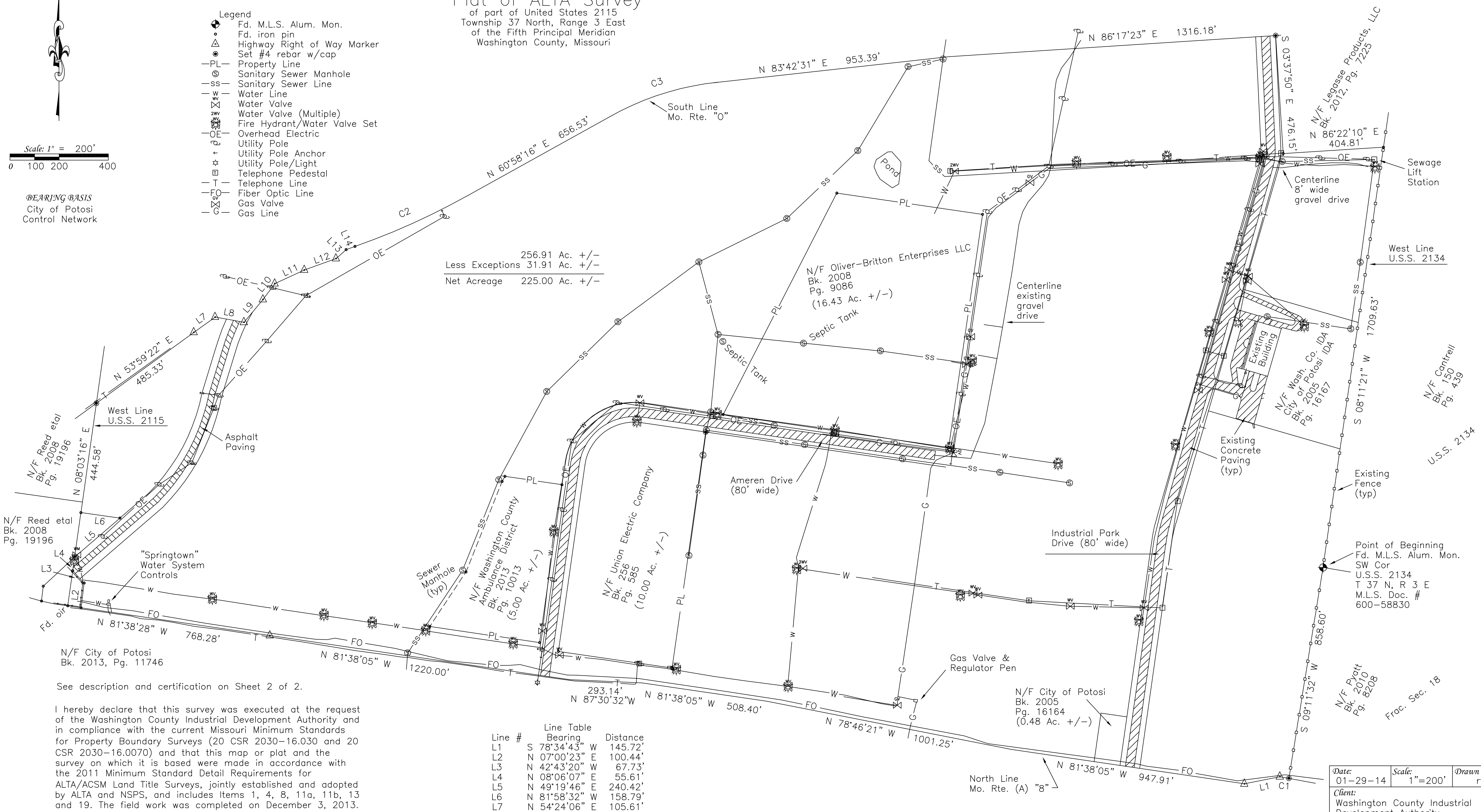
Scale: 1" = 200'
0 100 200 400

BEARING BASIS
City of Potosi
Control Network

- Legend
- Fd. M.L.S. Alum. Mon.
 - Fd. iron pin
 - △ Highway Right of Way Marker
 - Set #4 rebar w/cap
 - PL — Property Line
 - ⊙ Sanitary Sewer Manhole
 - ss — Sanitary Sewer Line
 - w — Water Line
 - ⊕ Water Valve
 - ⊕ Water Valve (Multiple)
 - ⊕ Fire Hydrant/Water Valve Set
 - OE — Overhead Electric
 - Utility Pole
 - Utility Pole Anchor
 - Utility Pole/Light
 - ⊕ Telephone Pedestal
 - T — Telephone Line
 - FO — Fiber Optic Line
 - ⊕ Gas Valve
 - G — Gas Line

Plat of ALTA Survey
of part of United States 2115
Township 37 North, Range 3 East
of the Fifth Principal Meridian
Washington County, Missouri

256.91 Ac. +/-
Less Exceptions 31.91 Ac. +/-
Net Acreage 225.00 Ac. +/-



Line #	Bearing	Distance
L1	S 78°34'43" W	145.72'
L2	N 07°00'23" E	100.44'
L3	N 42°43'20" W	67.73'
L4	N 08°06'07" E	55.61'
L5	N 49°19'46" E	240.42'
L6	N 81°58'32" W	158.79'
L7	N 54°24'06" E	105.61'
L8	S 79°50'49" E	117.73'
L9	N 39°51'54" E	119.42'
L10	N 36°33'33" E	79.44'
L11	N 65°10'57" E	131.11'
L12	N 70°08'03" E	135.83'
L13	N 48°19'57" E	53.85'
L14	N 70°08'05" E	37.97'

Curve #	Delta	Radius	Arc		Chord
			Arc	Chord	
C1	00°42'11"	2974.93'	36.51'	N 81°09'19" W	36.51'
C2	09°47'43"	2894.90'	494.91'	N 65°45'49" E	494.30'
C3	22°50'24"	1116.30'	444.99'	N 71°50'50" E	442.05'

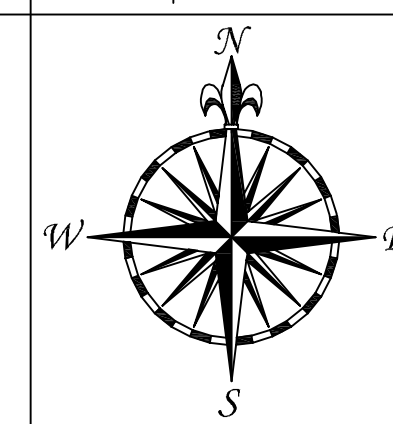
See description and certification on Sheet 2 of 2.

I hereby declare that this survey was executed at the request of the Washington County Industrial Development Authority and in compliance with the current Missouri Minimum Standards for Property Boundary Surveys (20 CSR 2030-16.030 and 20 CSR 2030-16.070) and that this map or plat and the survey on which it is based were made in accordance with the 2011 Minimum Standard Detail Requirements for ALTA/ACSM Land Title Surveys, jointly established and adopted by ALTA and NSPS, and includes Items 1, 4, 8, 11a, 11b, 13 and 19. The field work was completed on December 3, 2013.

IN WITNESS WHEREOF, I hereunto set my hand and affix my official seal at my office in Potosi, Missouri, this 29th day of January, 2014.

R. Timothy Daugherty
MO. P.L.S. #2096
Washington County Surveyor
January 29, 2014

Date: 01-29-14	Scale: 1"=200'	Drawn By: rtd	Field Work By: BB:TD
Client: Washington County Industrial Development Authority		Drawing Number 20130104 Sht. 1 of 2	



T. Daugherty & Associates, LLC
112 East High Street
Potosi, Mo. 63664
(573) 438-6489 Office
(573) 438-7987 Fax
tdaughertyassociatesllc@hotmail.com